

ATTACHMENT 1 – DA19/0865 - residential flat building comprising 40 units for  
social housing (NRPP)  
33 Boyd Street TWEED HEADS



View of site, looking north-west

ATTACHMENT 1 – DA19/0865 - residential flat building comprising 40 units for  
social housing (NRPP)  
33 Boyd Street TWEED HEADS



View of site's eastern (front) boundary, looking north-east

ATTACHMENT 1 – DA19/0865 - residential flat building comprising 40 units for  
social housing (NRPP)  
33 Boyd Street TWEED HEADS



View of site's northern and western (rear) boundaries, looking north-west

ATTACHMENT 1 – DA19/0865 - residential flat building comprising 40 units for  
social housing (NRPP)  
33 Boyd Street TWEED HEADS



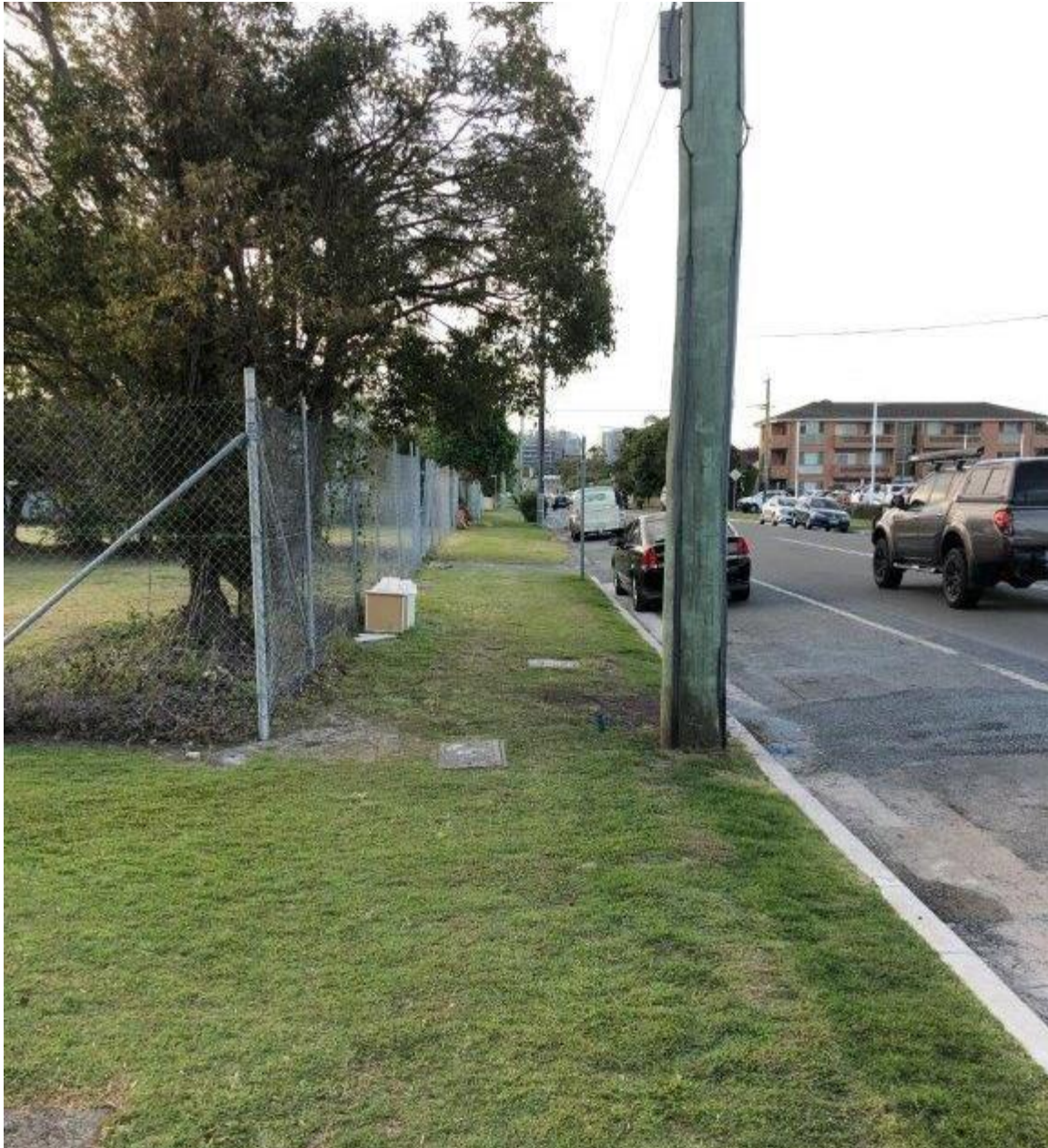
View of site's eastern (front) boundary, looking south

ATTACHMENT 1 – DA19/0865 - residential flat building comprising 40 units for  
social housing (NRPP)  
33 Boyd Street TWEED HEADS



View of site's southern and western (rear) boundaries, looking west

ATTACHMENT 1 – DA19/0865 - residential flat building comprising 40 units for  
social housing (NRPP)  
33 Boyd Street TWEED HEADS



View of site's frontage to Boyd Street, looking north

ATTACHMENT 1 – DA19/0865 - residential flat building comprising 40 units for  
social housing (NRPP)  
33 Boyd Street TWEED HEADS



View of site frontage to Boyd Street, looking north-west

ATTACHMENT 1 – DA19/0865 - residential flat building comprising 40 units for  
social housing (NRPP)  
33 Boyd Street TWEED HEADS



3-storey residential flat building adjoining the site to the south, fronting Boyd Street

ATTACHMENT 1 – DA19/0865 - residential flat building comprising 40 units for social housing (NRPP)  
33 Boyd Street TWEED HEADS



Tweed Day Surgery and Specialist Centre to the south-east of the site on Boyd Street



Nissan and Mazda car sales yard directly to the east of the site on Boyd Street

ATTACHMENT 1 – DA19/0865 - residential flat building comprising 40 units for  
social housing (NRPP)  
33 Boyd Street TWEED HEADS